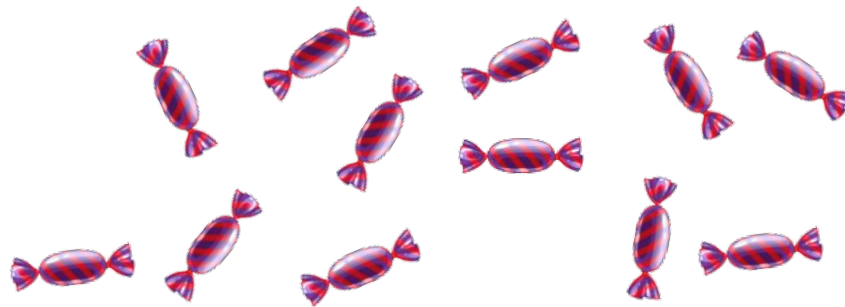


Make Equal Groups (B)

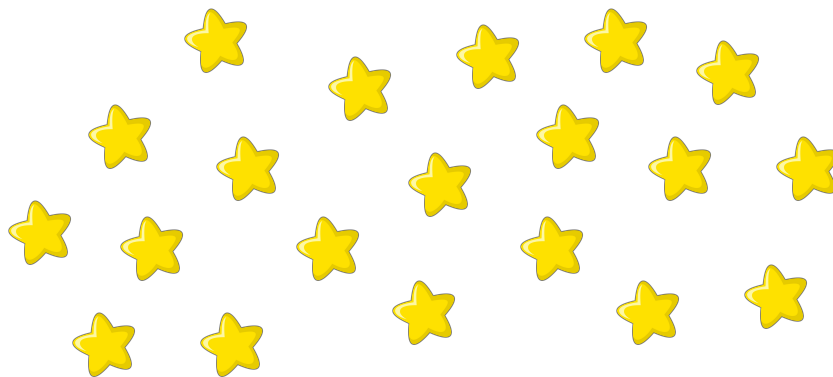
Make equal groups to complete the equation.

12 candies are divided equally into groups of 2. How many groups of candies are there?



$$\square \div \square = \square \text{ groups of candies}$$

20 stars are divided equally into groups of 4. How many groups of stars are there?



$$\square \div \square = \square \text{ groups of stars}$$